




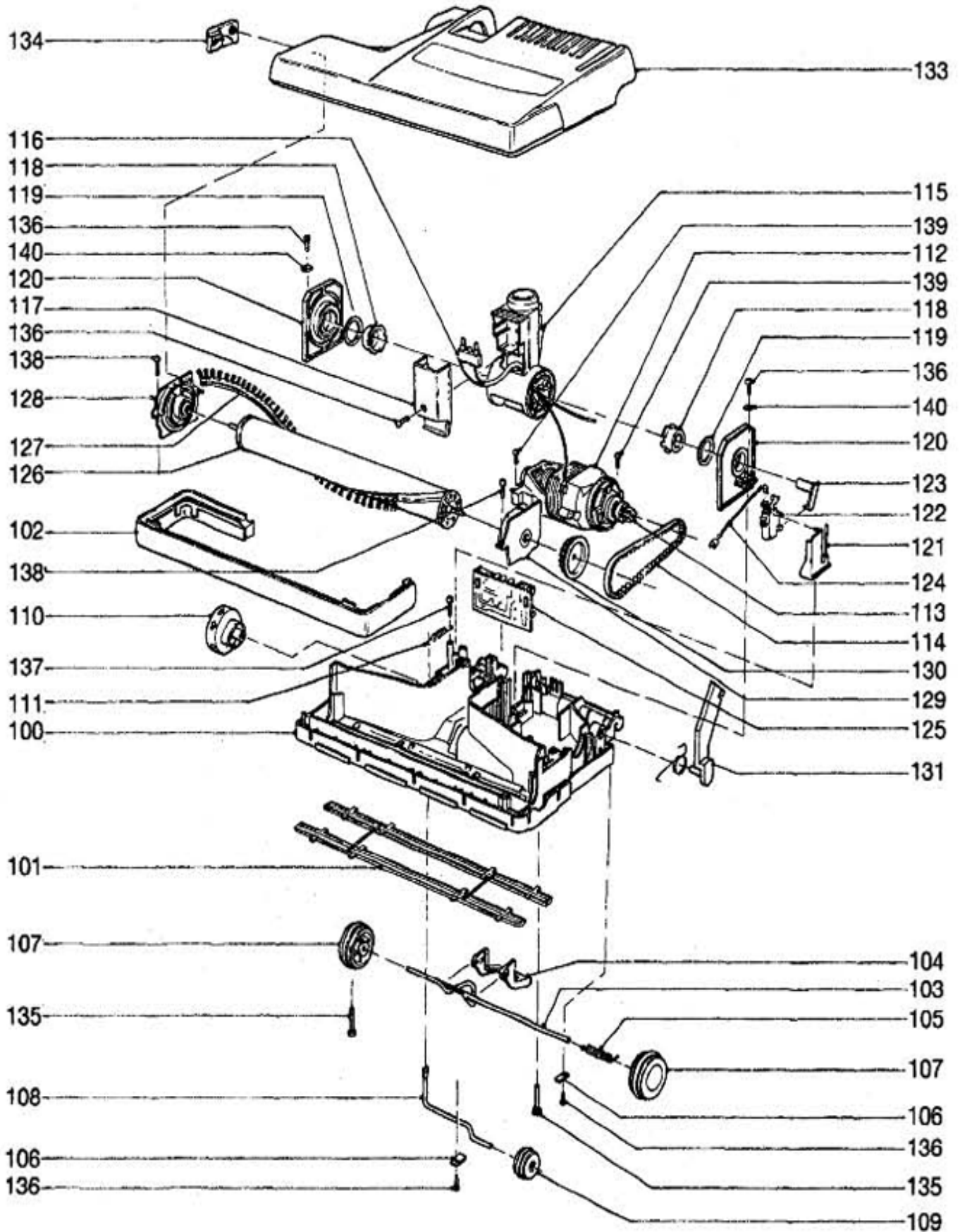


10 Electronic 370 Vac Bags	Electronic 370 Stair/Upholstery	Electronic 370 Vac Hose	Electronic 370 Floor/Wall Tool	Electronic 370 Radiator Brush
				

Bag Housing with Handle Parts List

1 1037EH Handle grip (incl. pos. 2, 3 + 12)	2 1596HG Handle cover	3 0127 Screw M4 x 10
4 1954DG Power supply cord	5 1848 Handle tube	6 1831HG Dust bag housing
7 1835DG Internal Cover	8 5289 Seal	9 5842 Seal
10 5424DG Retaining ring	11 1823HG Attachment clip	12 5359HG Grommet
13 0502 Terminal block 2-wire	14 1030UL Cable clamp	15 1812HG Cover
16 1814HG Carrying Handle	17 5146 Stop spring	18 1813HG Cable hook
19 1859DG Handle catch	20 0161 Clip 4 DIN 6799	21 0850DG Locking catch
22 1811 Locking rod	23 1265UL Terminal block	24 1807HG Connector
25 1836UL Female contact holder	26 1851 Sound insulation	27 1047 Vac motor seal
28 1843/2 Vac motor 120 V (incl.Pos. 29 + 30) 05118S Carbon brush set (After 2001) 0511/1 Carbon brush set (Before 2001)	29 1821UL Motor cover	30 1822 Support for motor
31 1027 Leaf spring	32 1073 Clamp	33 1824 Connecting rod
34 1875 Micro-Hospital-Filter	35 1935ER Printed circuit board w/switch 1903 PC Board cover	36 1860 Fitting
37 1852HG Suction pipe cover	38 1869HG Lens, bag light indicator	39 1830DG Switch button
40 1862 Return spring	41 1833UL Internal cable	42 1878 Exhaust filter
43 1802HG Exhaust filter cover	44 1853SE Motor cover	45 1804HG Dust bag housing bumper
46 1846HG Front cover complete (incl. pos., 47-50)	47 1818DG Cover release	48 6040 Seal, cover release
49 1819 Bearing cover	50 1847 Bag holder, complete (incl. pos. 51 + 52)	51 5091 Safety catch spring
52 1817 Safety catch	53 5093AM Filter bag	54 5045DG Extension Tube
55 5040SB Hose - silver, complete	56 1491DG Upholstery nozzle	57 1092DG Crevice Nozzle
58 0102 Screw 3.9 x 13	59 0103 Screw 3.9 x 16	60 1884HG Retaining button
61 1524 Terminal block cover	62 1081DG Mounting clip with screw	63 1387DG Dusting brush

Power Head



Power Head Parts List

100 2543HG Chassis	101 2005ER Metal plate set for 370	102 2522HG Bumper
103 2525 Axle	104 2528OR Foot pedal -orange	105 2010 Axle spring
106 2014 Axle clamp	107 2614HG Wheel, complete	108 2524 Pile adjustment axle
109 2608HG Pile adjustment wheel	110 2622HG Pile adjustment knob	111 4019 Spring
112 2241UE Brush motor 120 V, 150 W 05095S Carbon brush set 0512/1 Carbon brush set for 2241ER (Before 2001)	113 2025 Motor pulley	114 2049 Drive belt
115 2609UL Swivel neck assembly	116 2611UL Wire, swivel neck	117 2602HG Swivel neck cover
118 2467 Plastic bearing inside	119 0155 Washer	120 2613 Swivel Support
121 2624 Micro switch support, cpl.	122 0531 Micro-switch	123 2605 Switch. lever
124 0849UL Wire on neck to switch	125 2572ER Electronic controller	126 2030ER Brush assembly, cpl. (incl pos. 127)
127 2046 Brush strip	128 2047 Bearing block-right hand	129 2091 Bearing block-left hand
130 2458 Brush roller pulley	131 2653HG Support lever with spring	133 2623AM Cover, complete
134 2542 Brush strip cover w/screw	135 0111TL Screw AM5 x 30	136 0102 Screw 3.9 x 13
137 0103 Screw 3.9 x 16	138 0105 Screw 3.9 x 19	139 0174 Screw 3.9 x 22
140 0141 Locking washer		